

Apr 2024

A GBM Premium Brand

FINE ART
PRINTING

Experience

...the difference



PRICE LIST

EUROPEAN OFFICE

Munster Hall, Hartstonge Street
Limerick V94 H5P6
Ireland
+353 61 317 977

US OFFICE

55 E Monroe Street
Chicago IL 60603
USA
+1 312 593 7476

LET'S GET SOCIAL  



A **GBM** Premium Brand

Experience

...the difference

GICLÉE

Giclée (pronounced zhee-KLAY) is a term derived from the French word gicleur (jet or nozzle) and the associated verb gicler (to squirt). Giclée prints are high quality prints produced on large-format inkjet printers and the name simply refers to how the machines spray ink on to the paper.

To produce a high quality giclée print you need to tick four boxes:

- ✓ **RESOLUTION**
Giclée prints are printed at high resolution to ensure that the artist's original level of detail is accurately reproduced.
- ✓ **PAPER**
Giclée prints are printed on acid-free, museum quality paper. This kind of "archival" paper is made to last up to 100 years.
- ✓ **INK**
Giclée prints are produced using pigment-based inks that are also designed to last, so they shouldn't fade over time.
- ✓ **PRINTER**
Traditional printing processes use the four-colour CMYK system, our giclée printer (Canon Pro-4000 imagePROGRAPH) uses 12 colours, ensuring a vibrant depth of colour and excellent colour accuracy that will be almost indistinguishable from the original.

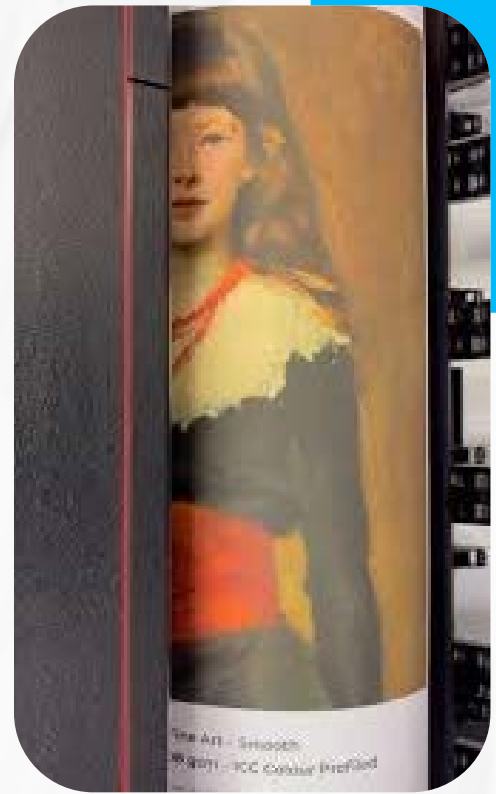
Giclée prints are high quality reproductions of original artworks that are designed to last.

You can maintain your print by following these simple steps:

- Don't handle your print too much. Natural oils on your hands could damage it.
- Frame your print.
- Keep away from moisture.
- Keep out of direct sunlight. Although giclée prints are designed not to fade, direct UV exposure can cause them to fade over time.

When sending us your file for Giclée printing, please ensure you follow the file requirements on page 6.

Prices are exclusive VAT, packaging and shipping costs. Price changes and printing errors reserved. No rights and / or obligations can be derived from this list. Our terms and conditions apply to all our deliveries.



Inches	Metric	A Sizes	Price Excl VAT	Price Incl VAT
10 X 8	250 X 208		€12.00	€14.76
10 X 12	250 X 300	A4 (210 X 297)	€14.50	€17.84
12 X 16	300 X 400	A3 (297 X 420)	€22.00	€27.06
16 X 20	400 X 500		€30.00	€36.90
20 X 20	500 X 500		€40.00	€49.20
16 X 24	420 X 594	A2 (420 X 594)	€42.00	€51.66
20 X 24	500 X 600		€46.00	€56.58
24 X 24	600 X 600		€54.00	€66.42
20 X 30	500 X 750		€62.00	€76.26
24 X 36	600 X 900	A1 (594 X 840)	€80.00	€98.40
30 X 30	750 X 750		€92.00	€113.16
30 X 40	750 X 1000		€105.00	€129.15
36 X 36	900 X 900		€120.00	€147.60
36 X 48	900 X 1200	A0 (840 X 1188)	€150.00	€184.50
36 X 53	900 X 1350		€165.00	€202.95

PRICE LIST



Prices are exclusive VAT, packaging and shipping costs. Price changes and printing errors reserved.
No rights and / or obligations can be derived from this list. Our terms and conditions apply to all our deliveries.



A **GBM** Premium Brand

Experience
...the difference

DYE SUBLIMATION

Dye sublimation is a printing process that uses a special ink that when heated sublimates (goes from its solid state directly into a gas) and then dyes whatever surface it's attached to. The process centers around using specialty ink and a machine that evenly heats and presses the ink into any given surface.

The use of dye sublimation (infusing dyes directly into the metal print), provides results that are outstandingly clear, vibrant, and well-preserved for years to come. The dye sublimation process on metal prints offers several advantages, including excellent color reproduction, high durability, scratch resistance, and resistance to fading. The resulting prints often have a glossy or matt finish and can showcase intricate details and vibrant colors.

For our own dye sublimation we use the Sefa SLIDE 1285 and can create prints up to 1200mm X 800mm.

When you are sending us your files for print by dye sublimation please ensure you follow the file requirements on page 6.

Dye Sublimation on metal			Panel Only		15mm Pro Hanging Kit	
Inches	Metric	A Sizes	Price Excl VAT	Price Incl VAT	Price Excl VAT	Price Incl VAT
8 X 12	200 X 300	A4 (210 X 297)	€65.00	€79.95	N/A	N/A
11 X 14	280 X 356		€70.00	€86.10	N/A	N/A
12 X 16	300 X 400	A3 (297 X 420)	€74.25	€91.33	€25.00	€30.75
16 X 20	406 X 508		€110.00	€135.30	€31.50	€38.75
16 X 24	406 X 610	A2 (420 X 594)	€132.00	€162.36	€36.00	€44.28
20 X 30	508 X 762		€231.00	€284.13	€49.50	€60.89
24 X 32	600 X 800	A1 (594 X 841)	€264.00	€324.72	€54.00	€66.42
32 X 48	800 X 1200	A0 (841 X 1189)	€528.00	€649.44	€81.00	€99.63

Prices are exclusive VAT, packaging and shipping costs. Price changes and printing errors reserved. No rights and / or obligations can be derived from this list. Our terms and conditions apply to all our deliveries.



Hahnemühle

It doesn't get finer than Hahnemühle

Founded in 1584, Hahnemühle is considered by many to be the Rolls-Royce of paper manufacturing, offering an exquisite range of fine art and photo papers for digital printing.

With an emphasis on traditional values combined with modern technology, their papers are chosen by artists across Europe for their exacting standards and ability to meet all creative demands. Many of their papers are acid-free and of archival-quality for long-lasting perfection.

The following papers are available at Fine Art Printing by GBM

One of the world's most popular fine art papers, this white cotton paper is an industry staple for versatile art and reproduction printing. It features a premium matt coating for outstanding print results, while maintaining a delightfully soft lightly-defined finish that will ensure the artwork stands out.

FINE ART PEARL - 285GSM

This bright white paper adds a delicate luxury to any design, with its subtle pearl-gloss finish helping to elevate each detail. The silky-smooth premium finish contributes to impressively deep black tones and dazzling contrasts.

ChromaLuxe[®]

True to your vision[®]

Optimized for photography and engineered to last a lifetime, the high-performance photo panels manufactured by ChromaLuxe can bring even the smallest details to life by allowing images to be infused directly into sheets of metal.

THE DELIGHT IS IN THE DETAILS

Only our state-of-the-art coating can capture the minute details that elevate your image to the extraordinary.

ARCHIVAL QUALITY FOR EVERY APPLICATION

Whether you're curating a home gallery or perfecting a commercial environment, ChromaLuxe quality lasts a lifetime.

PERSONALIZED PRESENTATION OPTIONS

The durability of ChromaLuxe allows you to display prints with wall mounts or traditional frames, no glass required.



PRICE LIST



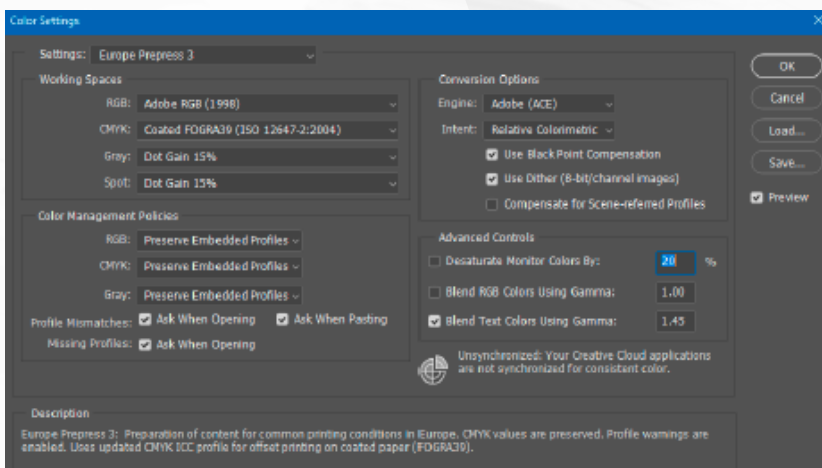
Prices are exclusive VAT, packaging and shipping costs. Price changes and printing errors reserved. No rights and / or obligations can be derived from this list. Our terms and conditions apply to all our deliveries.

FILE REQUIREMENTS

Fine Art Paper Prints	Real ChromaLuxe HD Metal
CMYK PDF	Adobe RGB PDF
Flattened	Flattened
300 DPI	300 DPI
Set to exact mm size	Set to exact mm size
No Crop Marks or Bleed	No Crop Marks or Bleed
Adobe Suite Colour Settings Europe Prepress 3 (see below)	Adobe Suite Colour Settings Europe Prepress 3 (see below)



A GBM Premium Brand



Experience
...the difference



EUROPEAN OFFICE
Munster Hall, Hartstonge Street
Limerick V94 H5P6
Ireland
+353 61 317 977

US OFFICE
55 E Monroe Street
Chicago IL 60603
USA
+1 312 593 7476

LET'S GET SOCIAL 